

POP, ROCK & BLUES SUITE

Andrew Watkin

1. Pop

$\text{♩} = 136$

5

f

10

mf

16

mf

22

mp

28

mf

35

mf

42

mf

48

2nd time only

f

54

60

2

67

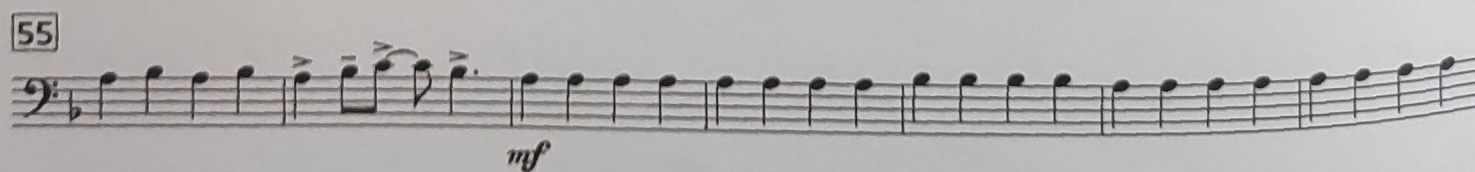
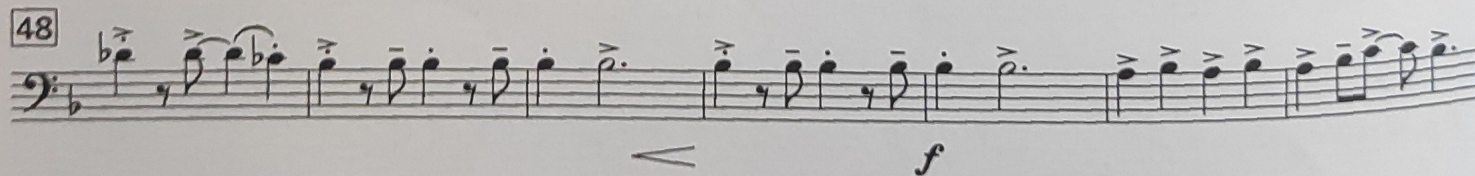
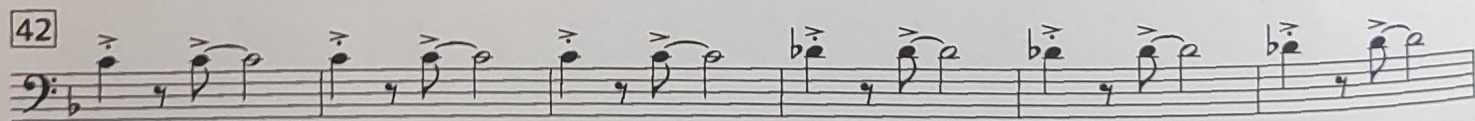
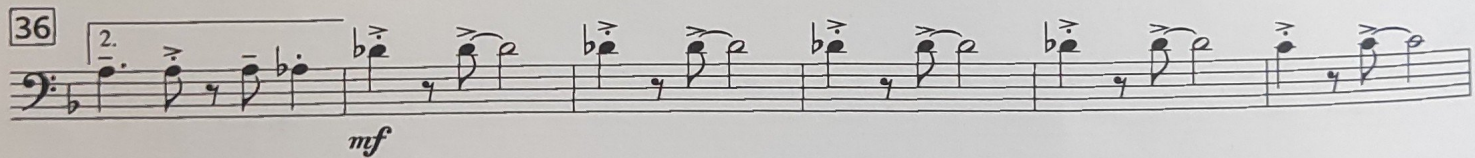
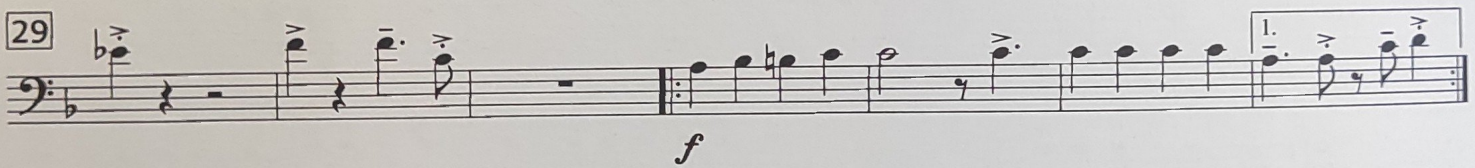
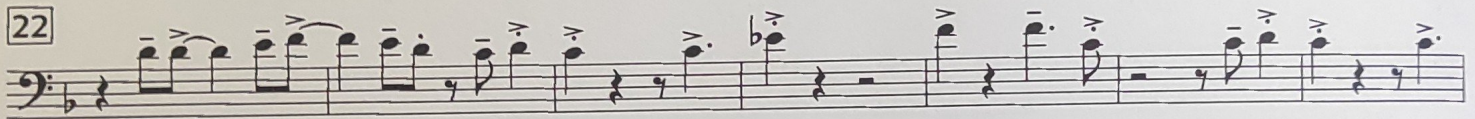
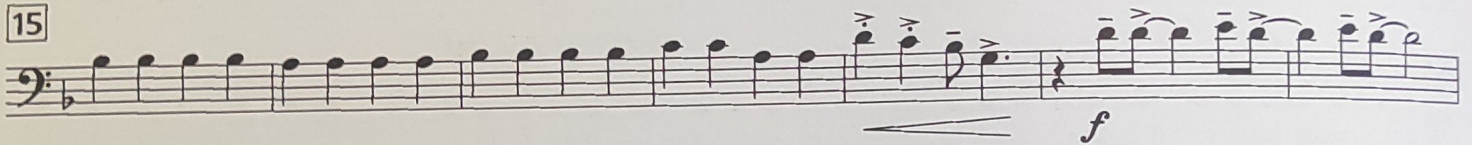
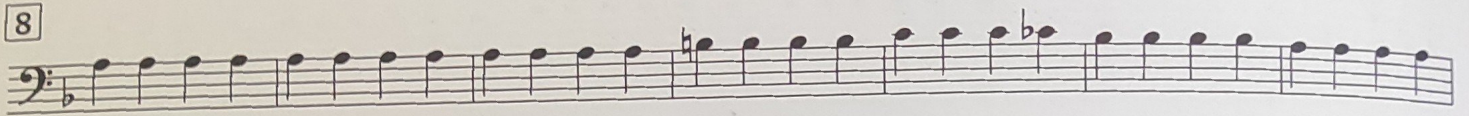
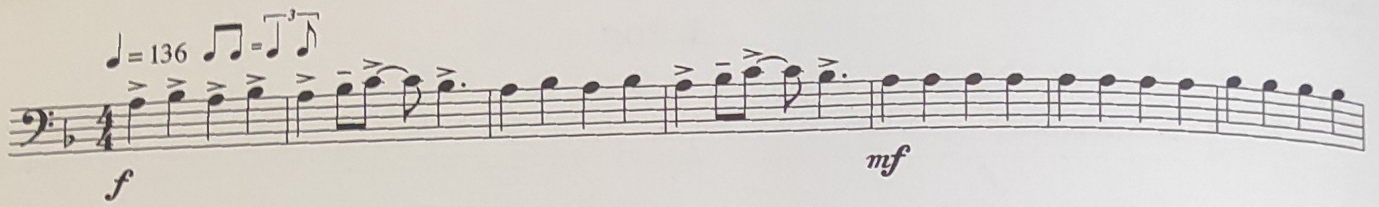
f

73

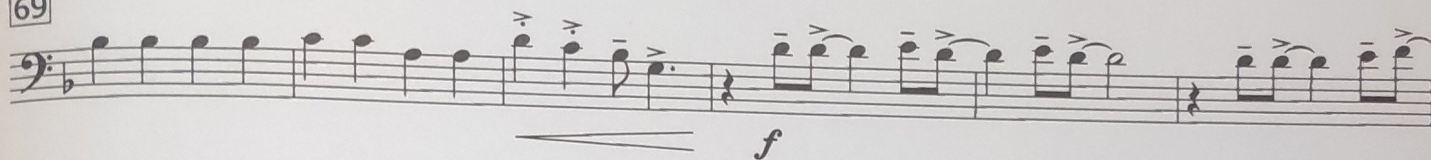
80

ff

2. Rock



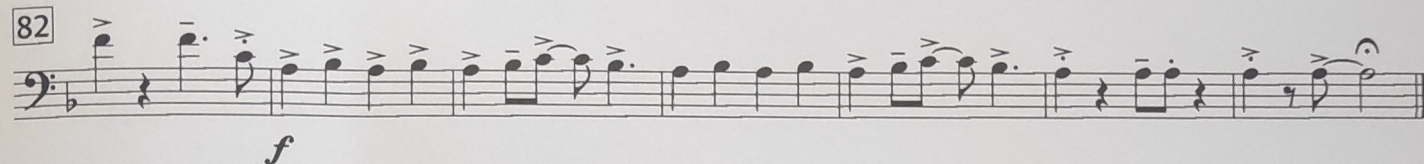
69



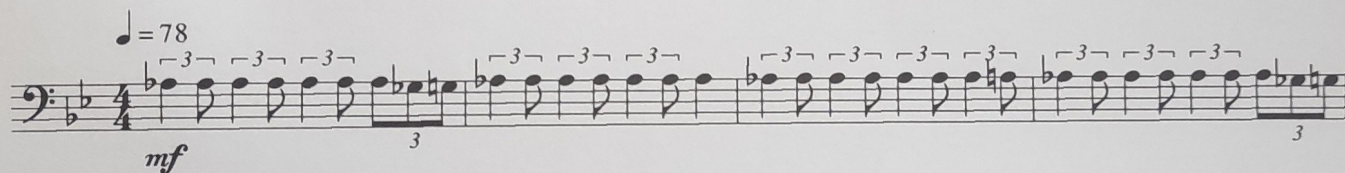
75



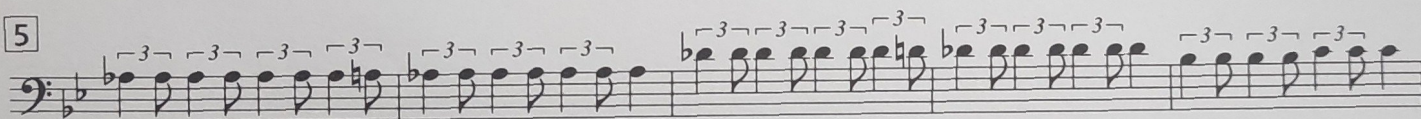
82



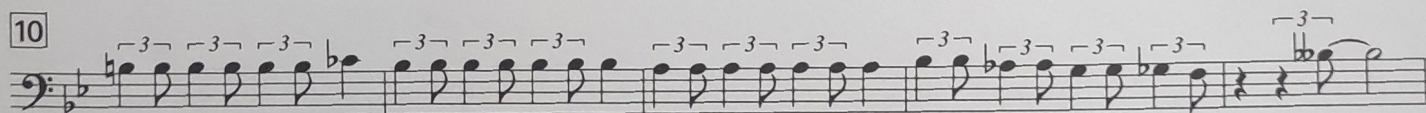
3. Blues



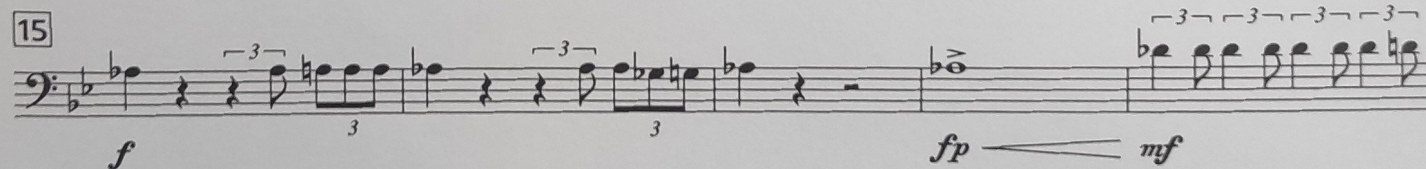
5



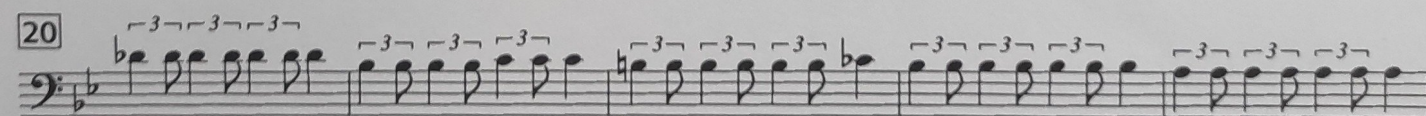
10



15



20



25

