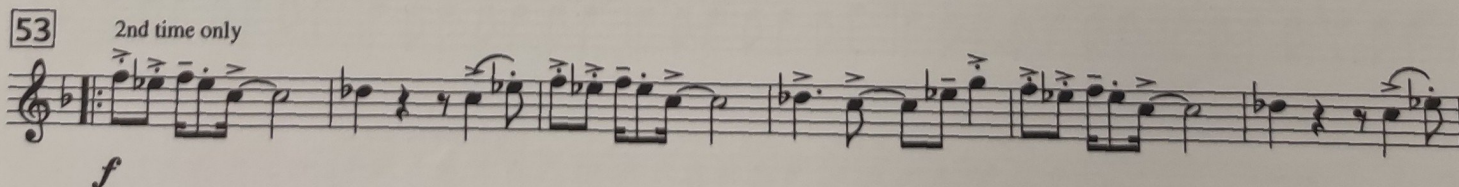
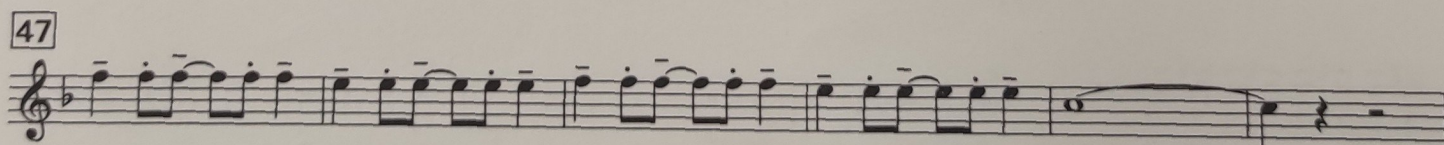
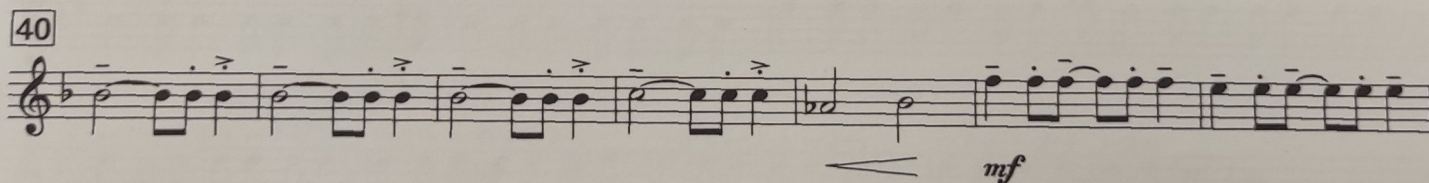
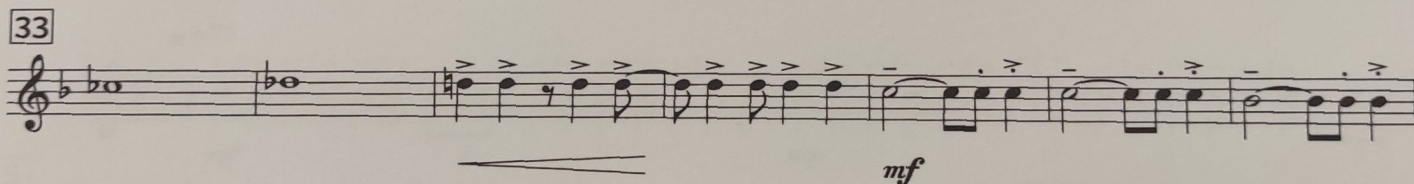
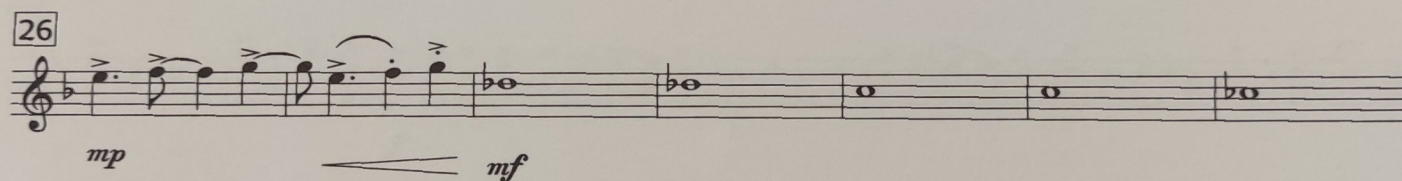
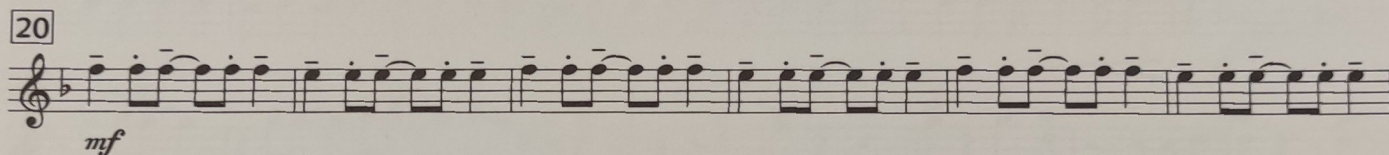
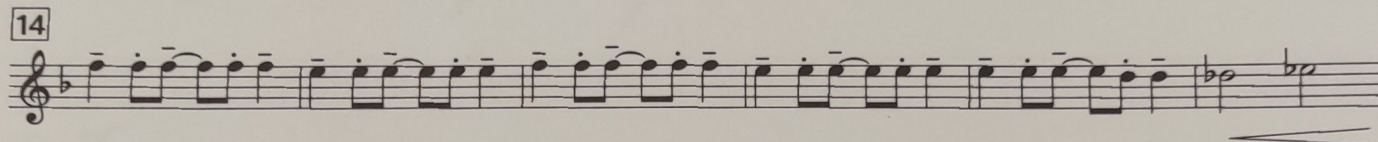
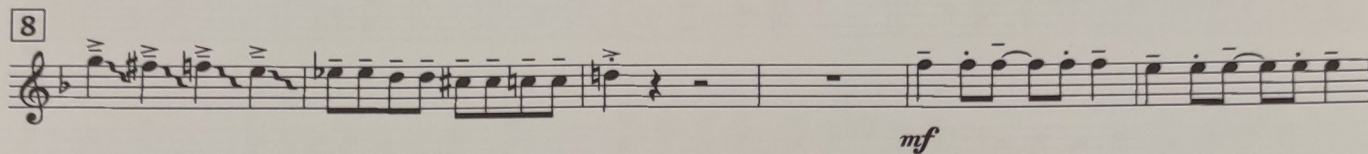
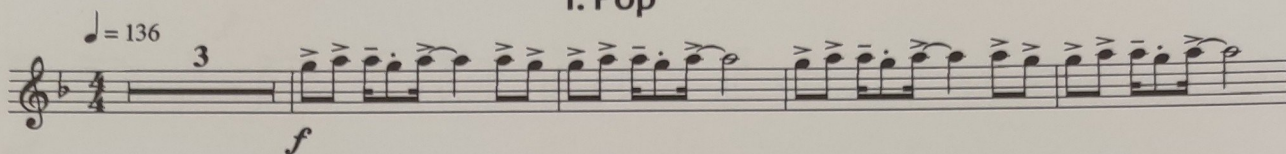


Part 2 C
Flute

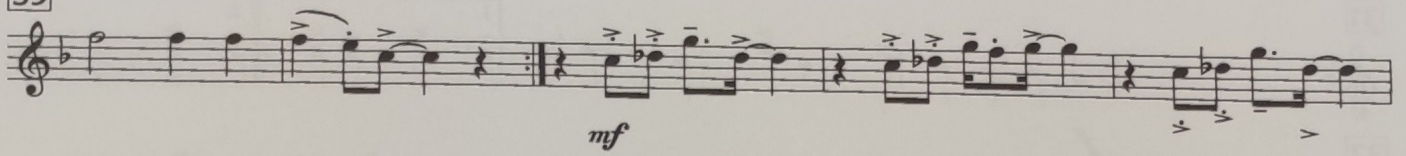
POP, ROCK & BLUES SUITE

Andrew Watkin

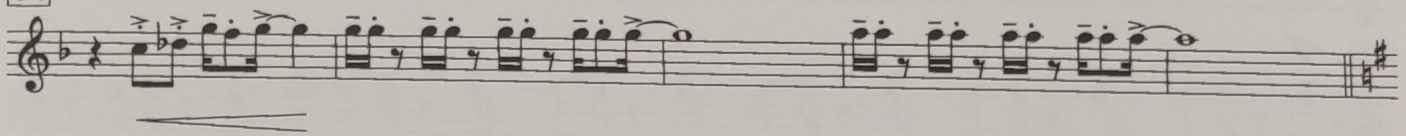
1. Pop



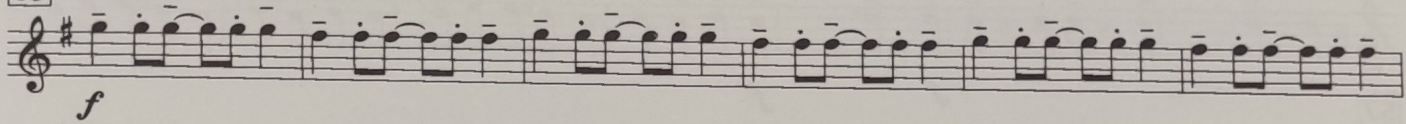
59



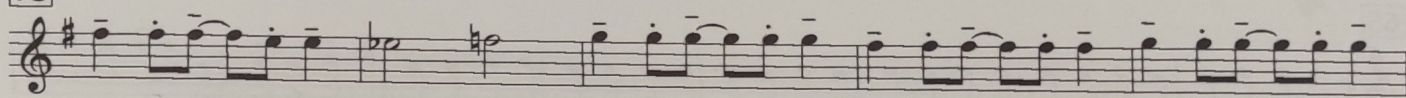
64



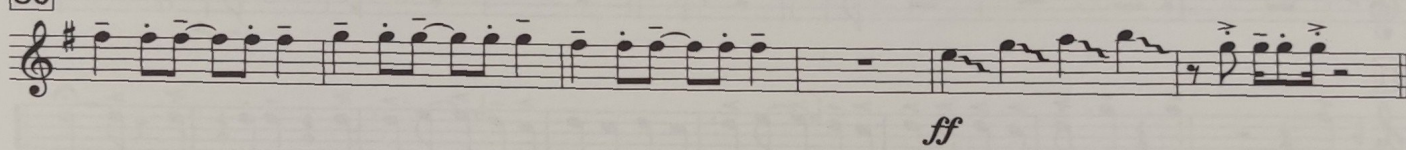
69



75

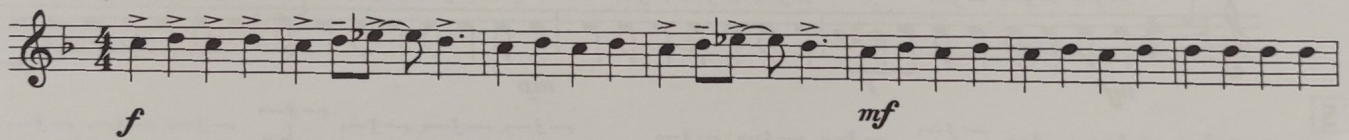


80

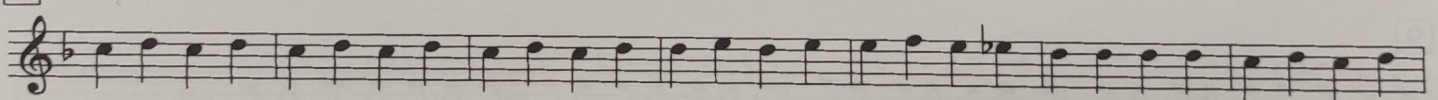


2. Rock

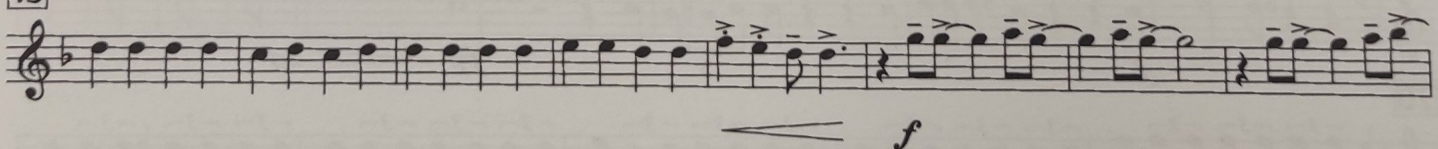
$\text{♩} = 136$ $\text{♩} = \text{♩}^3$



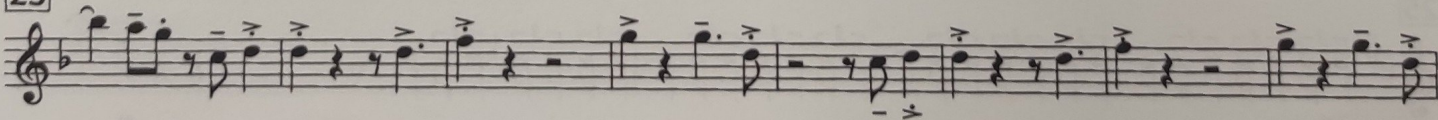
8



15



23



31

37 *f*

44 *mf*

50

57 *f* *f*

65 *mf*

73 *f*

81 *f*

3. Blues

$\text{♩} = 78$

5 *mf* *mp*

9

14 *f* *fp* *mf*

20

25 *p*